

# Improving Outpatient COPD Management: A Quality Improvement Initiative Using the New GOLD Classification System



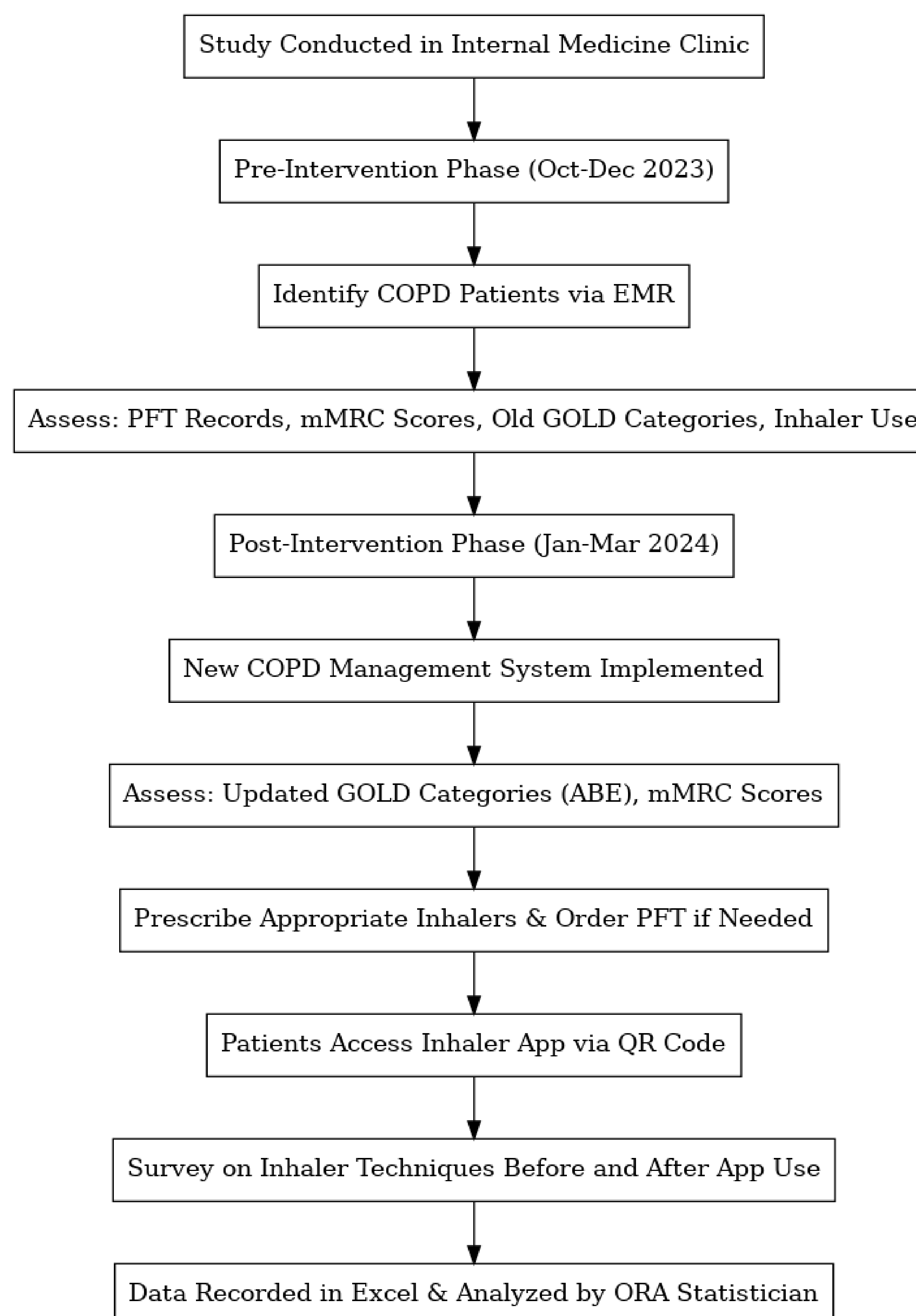
Amna Amir MD, Warsha Mal Korani MD, Sagar Kumar MD, Pham Huan MD, Saba Waseem, MD  
Department of Internal Medicine, Conemaugh Memorial Medical Center, PA, USA



## INTRODUCTION

- In 2020, there were 335,000 hospitalizations due to chronic obstructive pulmonary disease (COPD) exacerbations.
- In 2023, the Global Initiative for Chronic Obstructive Lung Disease (GOLD) introduced a new COPD classification system, replacing the old ABCD system with the ABE system to improve disease severity stratification and management
- This QI project aims to accurately categorize COPD patients in our clinic using the new GOLD system and prescribe appropriate inhalers, thereby reducing the risk of exacerbations and hospitalizations.

## METHODS

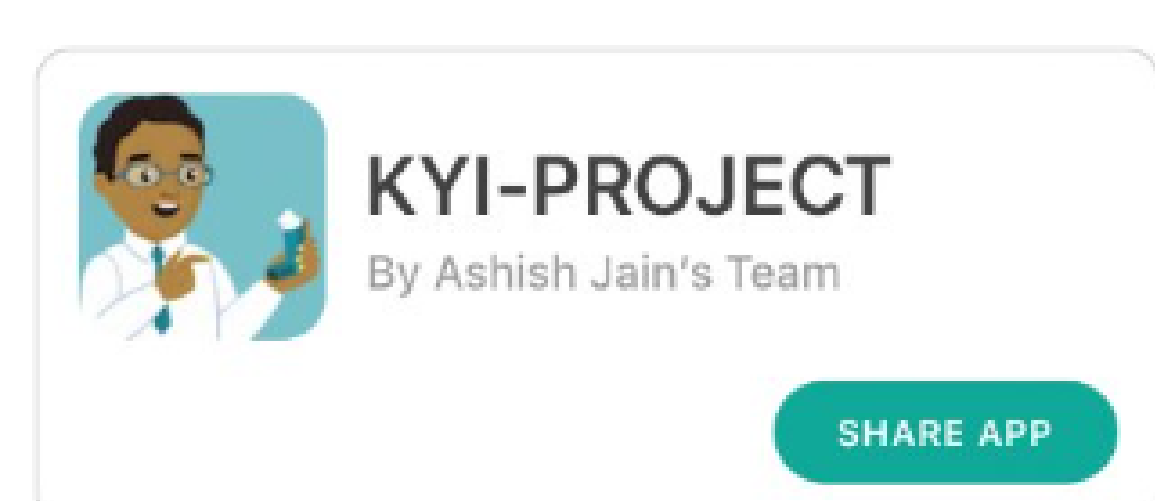


## RESULTS

- In the pre-intervention group of 21 patients, 7 lacked baseline PFT data.
- The GOLD categories were A (4) B (8) C (1) D (8) with one patient having expired.
- Symptoms and mMRC assessments revealed that 9/20 patients were not receiving appropriate inhalers per the new GOLD categories ABE
- Post-intervention, 34 patients were identified with GOLD classifications: A (17) B (9) C (3) D (5). mMRC scales were 21% at 0, 47% at 1, and 32% at 2.
- Changes in GOLD categories included 1 patient moving from B to A, 1 from C to B, and 1 from D to B, while 5 moved from A to B, 1 from C to E, and 4 from D to E.
- Overall, inhalers were adjusted appropriately for 11% of them. 14/34 patients in the post-intervention group did not have baseline PFT. This data is preliminary and further data collection is ongoing.

## CONCLUSION

- The intervention led to correct inhaler adjustments for most patients, with 37.8% of the post-intervention group categorized into their appropriate GOLD categories and 11% started on appropriate inhalers.
- Preliminary results suggest that this system could optimize COPD management and potentially reduce hospitalizations and exacerbations. However, further data collection is needed for a comprehensive evaluation.



Scan to Install  
\*If your camera doesn't have a QR code scanner, you can send the link via sms or copy the link here.

